

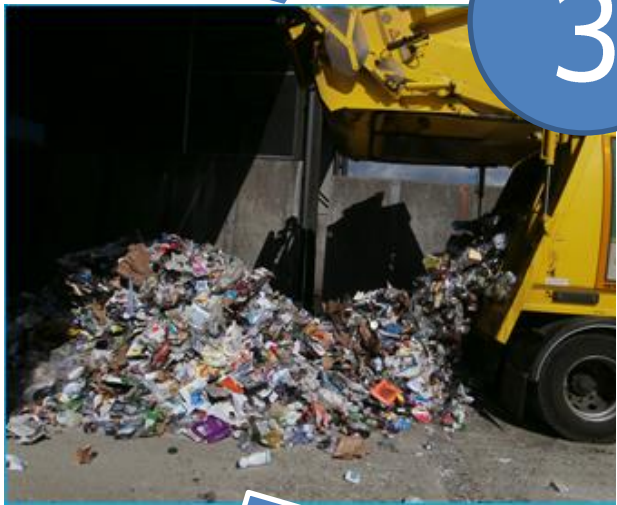
# Mixed Recycling



Mixed recycling is stored in the blue-lidded bin at home



The collection crew empty the blue-lidded bin on a fortnightly basis



The mixed recycling is weighed, emptied and stored at Cupid Green Depot



Next, it is transferred to a Materials Recovery Facility in Kent. Magnets, air jets and large rotating drums are used to separate the recycling.



Once the materials are separated, they are sent to the relevant factory to be recycled into new products.



The new products, such as newspapers, plastic bottles, cereal boxes and glass jars, are sold in shops.