

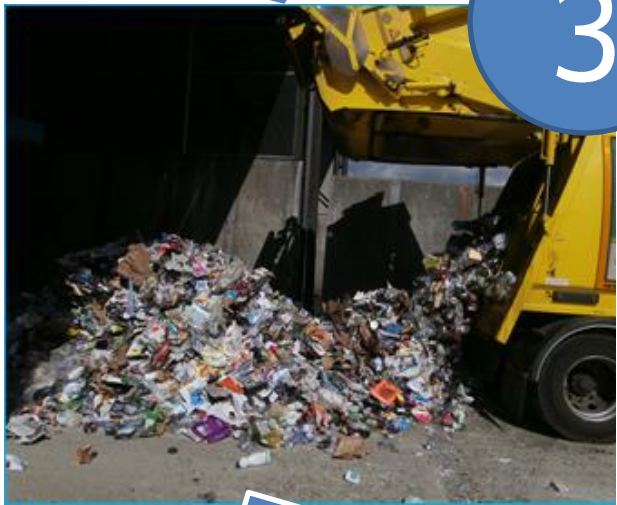
Mixed Recycling



1
Mixed recycling is stored in the blue-lidded bin at home



2
The collection crew empty the blue-lidded bin on a fortnightly basis



3
The mixed recycling is weighed, emptied and stored at Cupid Green Depot



4
Next, it is transferred to a Materials Recovery Facility in St Albans. Magnets, air jets and large rotating drums are used to separate the recycling.



5
Once the materials are separated, they are sent to the relevant factory to be recycled into new products.



6
The new products, such as newspapers, plastic bottles, cereal boxes and glass jars, are sold in shops.